



The medical market has undergone profound transformations and the medical business has become increasingly competitive. While looking for ways to increase your revenue, you are also eager to purchase more cost-effective CT scanner that meets your daily routine applications. At the same time, we also hope that much lower cost in running, consumption, maintenance and repairment. **ELEGNTON E200** is such a CT scanner, which can meet all your concerns above. A brilliant CT you wanted for your business!

BOOSTING YOUR BUSINESS BY EFFICIENCY

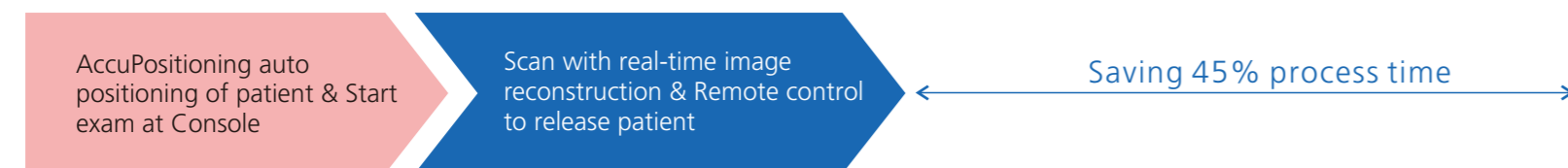
*AccuPositioning-intelligent sky-eye positioning system

"sky-eye" camera can intelligently recognize the 3D center of the scan range and automatically aligns it with the isocenter.

With one click, AccuPositioning uses all of this information to automatically center your patient for a completely hands-free positioning experience.



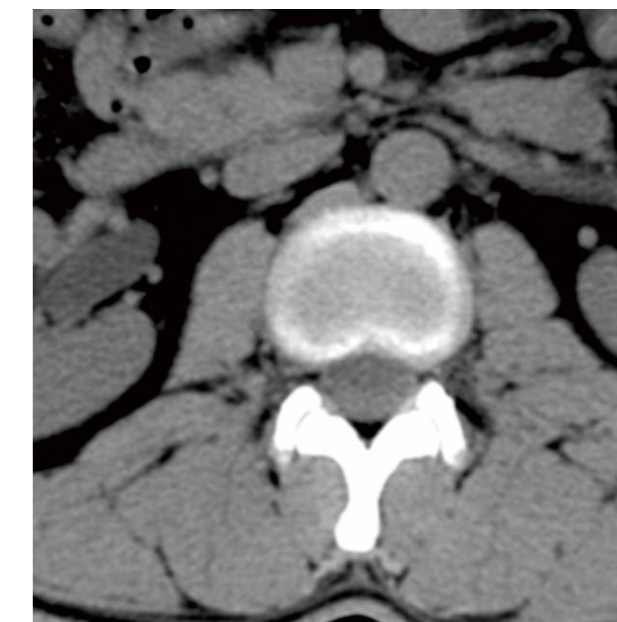
ELEGNTON E200 workflow



Traditional workflow



Efficient & precise digital tilt

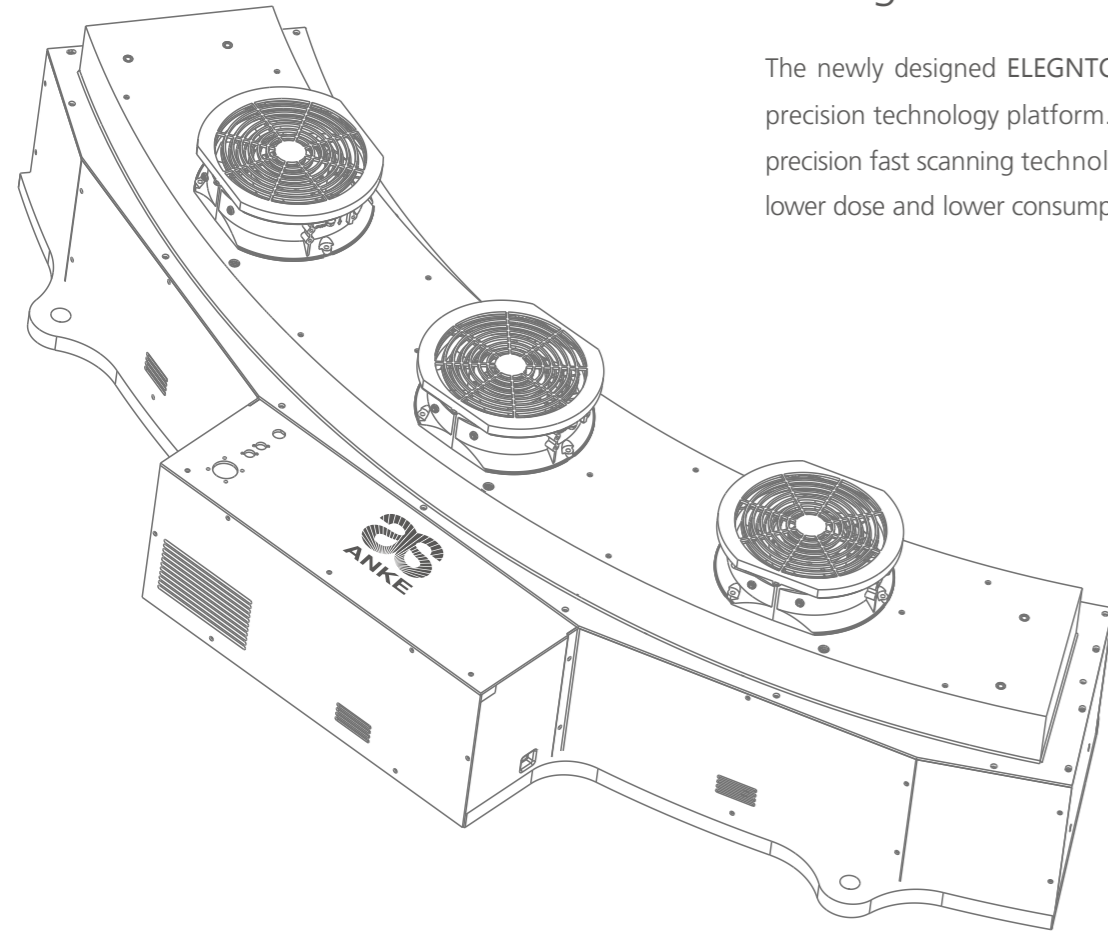


This advancement in image reconstruction technology enables you to scan patients more efficiently up to 20% when compared with mechanical tilt. It's simpler, faster and accurate. It will also help you manage the challenging and less cooperative patients.

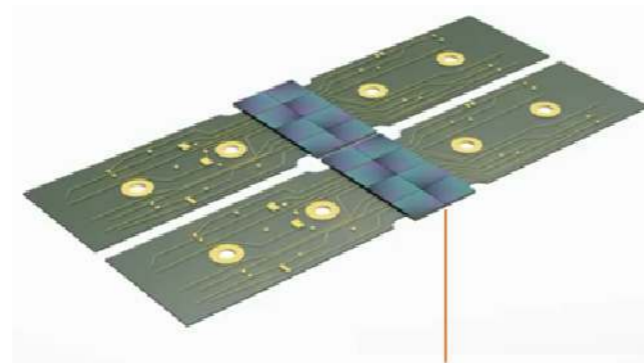
BOOSTING YOUR BUSINESS BY TECHNOLOGIES

New generation OptiWave™ detector technology

The newly designed ELEGNTON E200 adopts the world leading technologies inherited from precision technology platform. The latest new generation OptiWave detector and innovative precision fast scanning technology are combined with Admir^{3D} iterative technology to achieve lower dose and lower consumption but higher image quality.



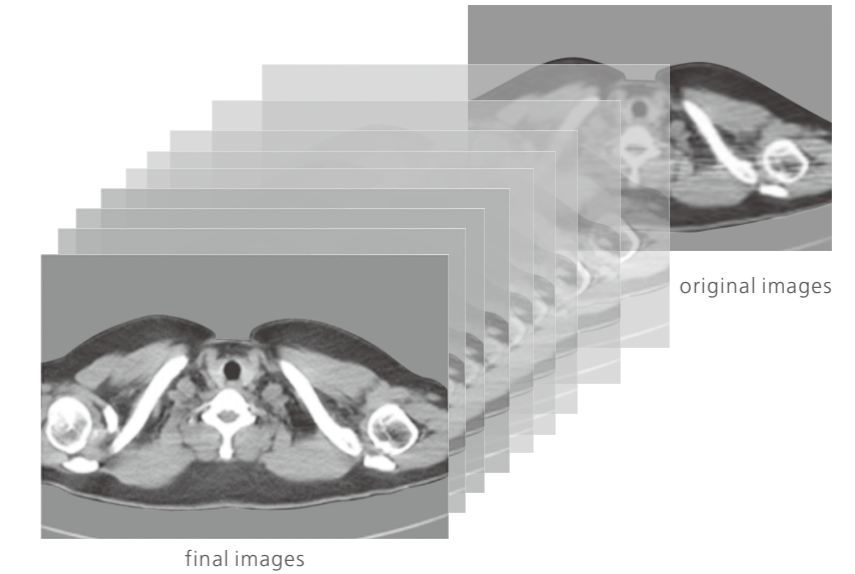
New generation OptiWave detector



Scintillator+TFT Matrix+ A/D Conversion

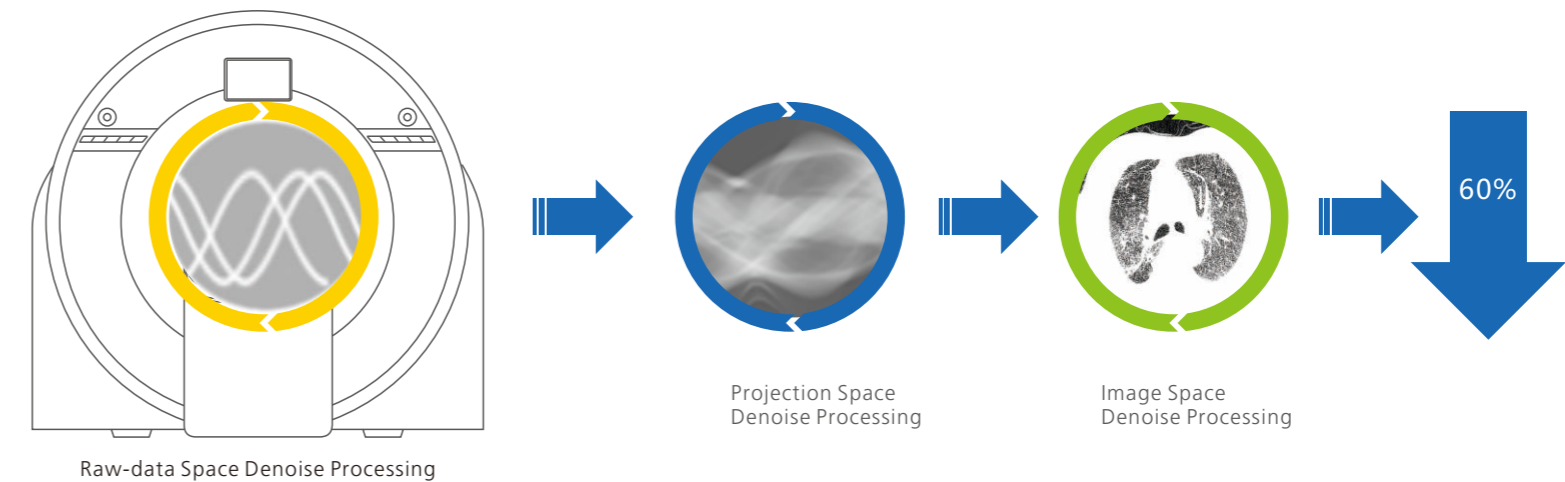
Admir^{3D} iterative reconstruction technology

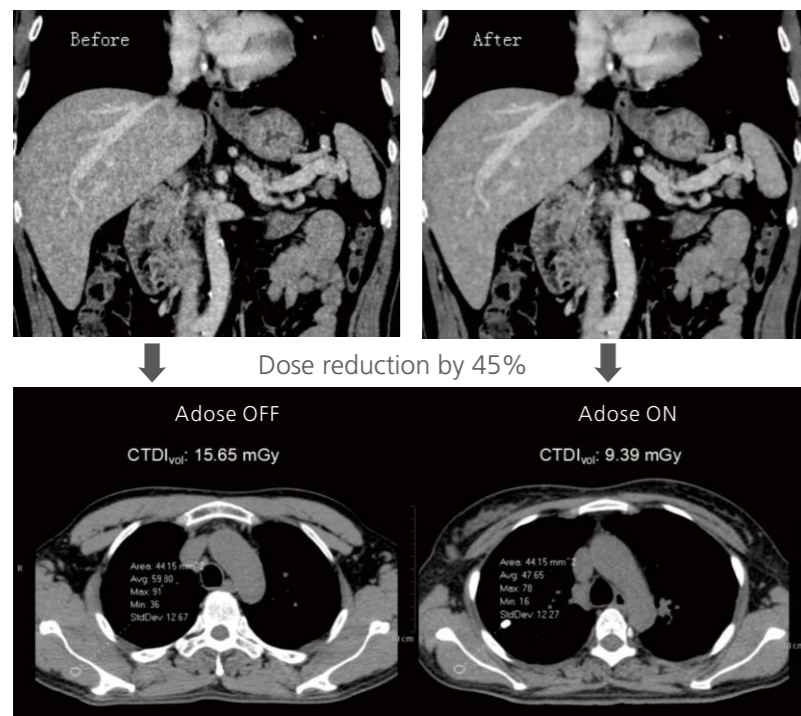
Admir^{3D} applies mathematical and physics models to accurately construct and describe the signal's quantum characteristics. Iterative operations are performed in the three spaces of raw data, projection and image, to greatly reduce the image noise and achieve optimal image quality with low dose.



Reconstruction speed: 30 Frams/second
Note: the 30 fps is without Admir^{3D}

Raw data acquisition





Adose-Dose management platform technology

Automatic mA technology automatically controls tube current to increase or decrease the signal as necessary to maintain constant image noise while lowering dose

Dose monitoring - A comprehensive dose management solution, based on principle of as low as reasonably achievable (ALARA), tracks and monitors patients.

Pediatric dose optimization - specially dedicated protocols for pediatric patients with ultral-low dose care

Admir^{3D} can achieve low dose and low noise scanning without compromising image quality

* AI-based artifact suppression technology

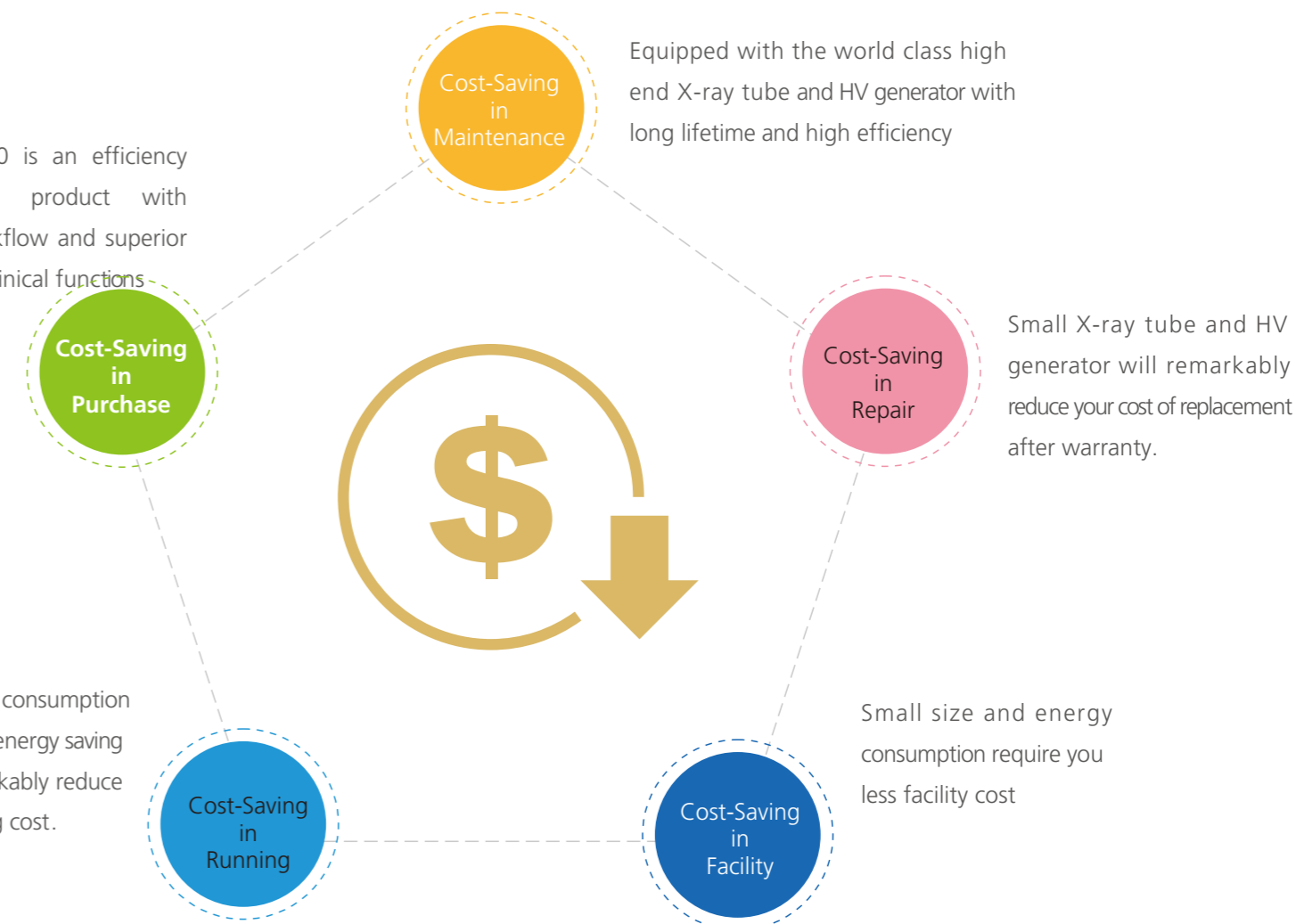
Gantry's built-in camera - "Eagle Eye" allows real-time monitoring of the patient's status, together with the AI-based AccuClear function, and enables intelligent real time image artifact correction.



BOOSTING YOUR BUSINESS BY REDUCING COSTS

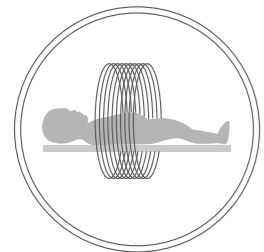
ELEGNTON E200 is an efficiency and profitable product with streamlined workflow and superior comprehensive clinical functions

Low total power consumption and AccuSaving energy saving technology remarkably reduce your daily running cost.



BOOSTING YOUR BUSINESS BY CARE

AccuDose-Comprehensive low dose imaging



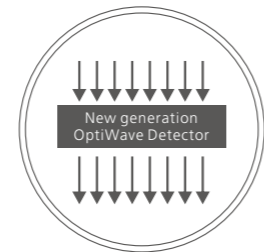
Pediatric Scan Protocol



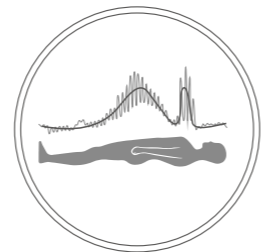
Individual Dose Monitoring



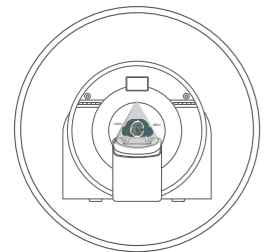
AccuShape Filter



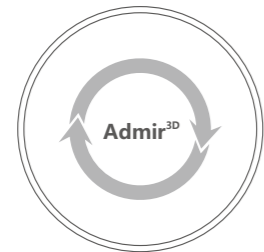
Efficient Detector



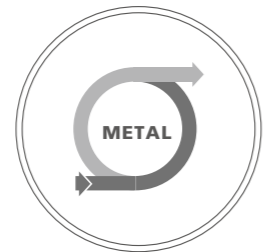
Adose Dose Modulation



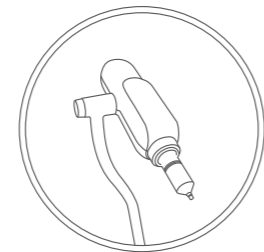
AccuSpin



Iterative Reconstruction

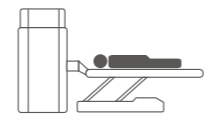


Amast



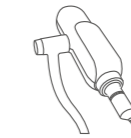
Contrast Agent Tracking Technology

AccuScan-Enjoy easy convenient and efficient operation process greatly improve clinical efficiency to achieve high patient throughout



AccuOrientation

Preset intelligent positioning procedures to enable one-button accurate patient positioning



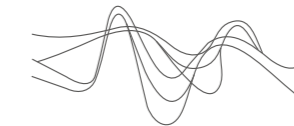
AccuTracing

Automatic bolus tracking to trigger the scan for precise scan timing



AccuEmergency

Skip patient registration for emergency scansto save time



AccuReconstruction

Up to 65 frms / sec real-time reconstruction



AccuScanning

Carefully designed default scan protocols help to get high quality images with ease

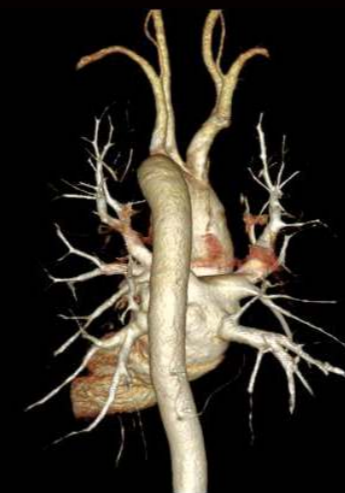
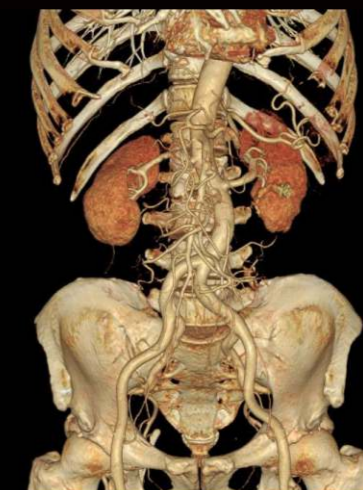
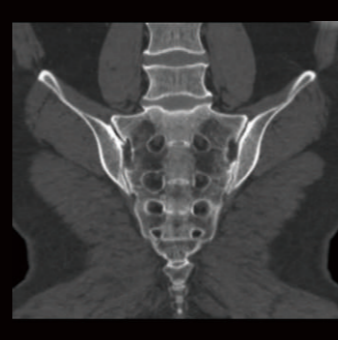
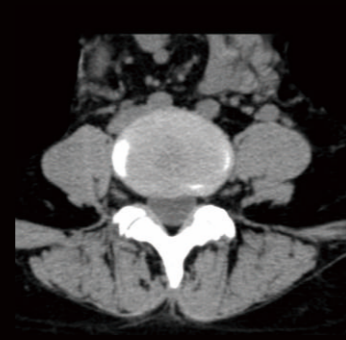
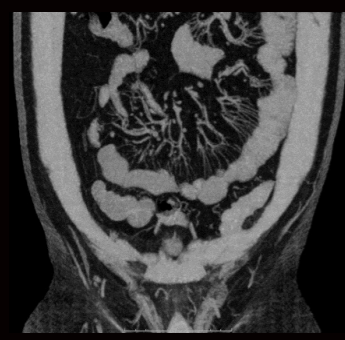
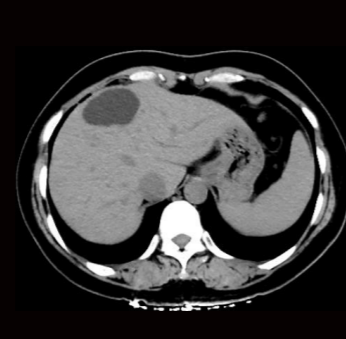
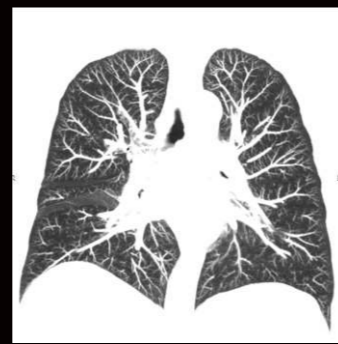
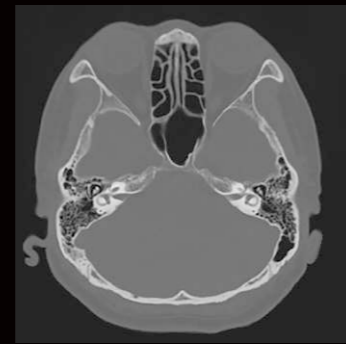
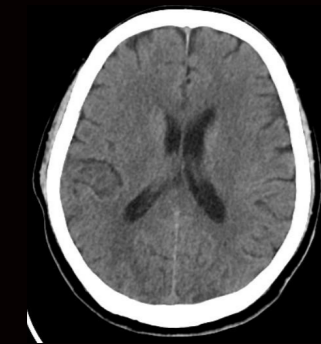


AccuPrinting

Intelligent typesetting and quick printing to save time

CLINICAL APPLICATIONS

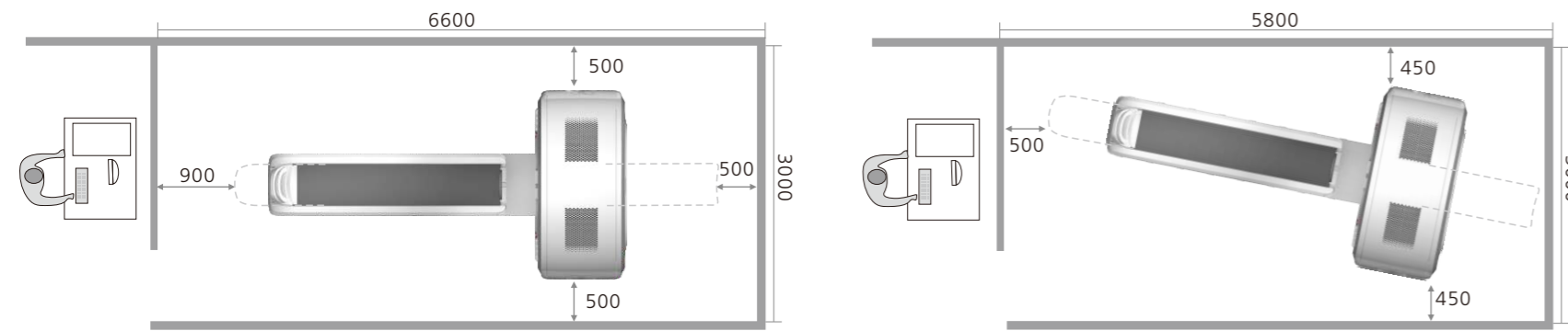
Fast, precise and low-dose imaging technologies provide a full range of clinical solutions to meet the current and future clinical diagnostic needs



BOOSTING YOUR BUSINESS BY ACCOMMODATION

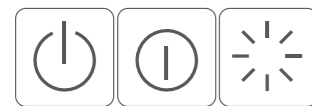
Fit Your Space

ANATOM Fit has been so compactly designed and engineered to meet the clinical needs of hospitals and facilities with room limitations. The compact footprint and low power demands enable the ANATOM Fit to easily install into many single and dual slice CT rooms. Contact us for specific requirements about optional imaging/viewing/power equipment, floor space and electrical, mechanical, structural or environmental specifications.



Fit Your Energy-AccuSaving Green & Energy-saving

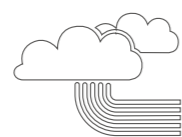
AccuSaving is an innovative energy saving technology. The system will enter the "dormant", which is a low carbon mode, after a certain stand-by time or per user's request. To bring the system back to work status is as easy as to push a button. The system will also remind the user to perform necessary warm-up and calibration procedures, which are fully automated processes. AccuSaving technology can reduce operation and standby power consumption, save the electricity cost by 30% by adopting different operation modes in working and off hours



Intelligent segmented sleep

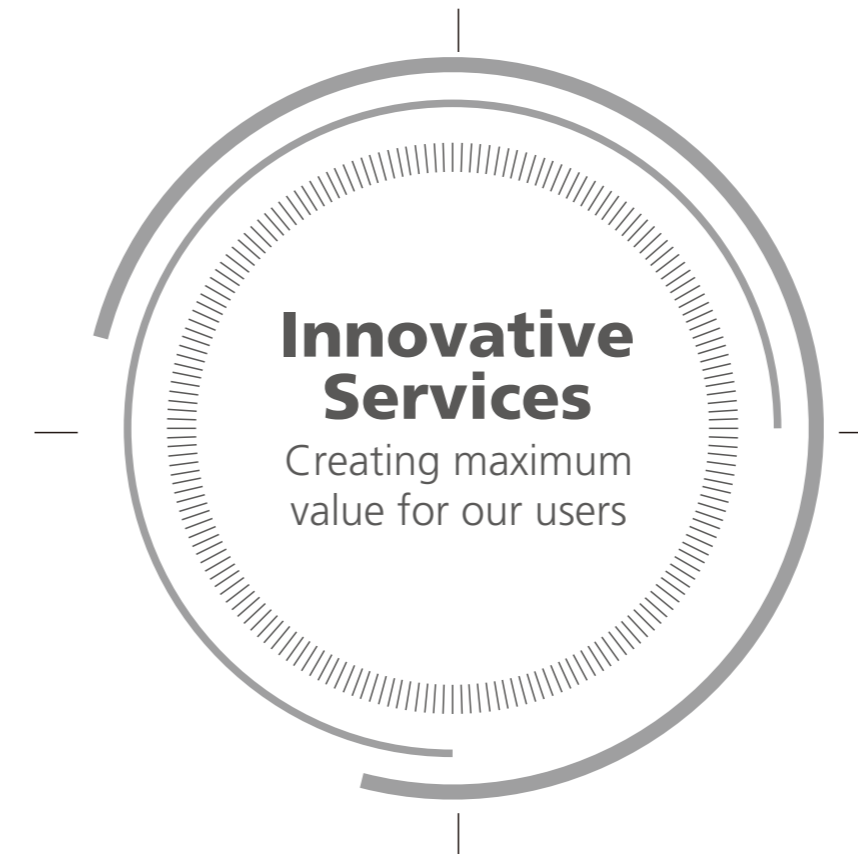


Low power consumption



Low heat dissipation

From the moment you choose ANKE, our all-round cooperation begins. Once you are in ANKE's global customer service system, you will experience a complete service solution that is all you expect, all you want and all you need.



Service Platform

- 24-hour call centre service
- Spare parts guarantee in the spare parts centre
- Professional tools for efficient insurance



Service Quality

- One-to-one service by technical experts
- Preventive maintenance
- Timely detection of hidden problems



Service Network

- Over 100 engineers
- Over 30% technical experts
- R&D-led technical support centre



Service Efficiency

- Remote support
- Fast problem solving
- Efficient dispatch to reduce time